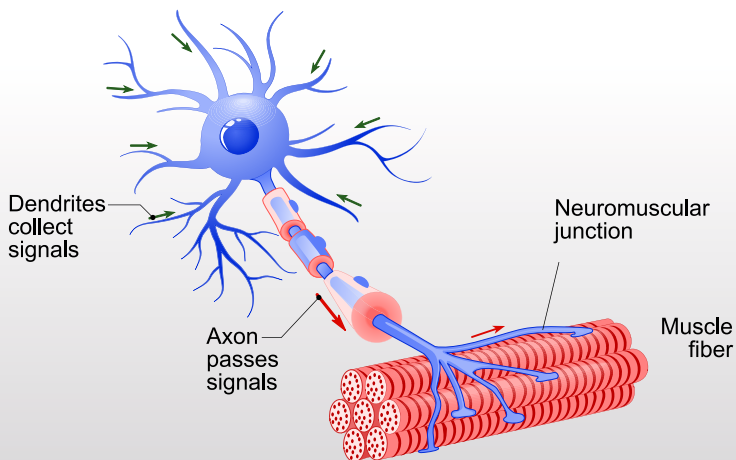


EMG

An invasive diagnostic procedure to assess the health of muscles and the nerve cells that control them (motor neurons).



1. Inform your doctor if you are on blood thinners or have a history of bleeding tendencies.
2. The procedure takes around 1 to 2 hours depending upon the number of muscles to be tested.
3. During the procedure, a small, thin needle electrode is inserted into several muscles to look for the disease, while electrographic readings will be taken.
4. You may feel slight pain or minor bleeding around the electrode insertion point during the test.
5. Reports will be issued in one hour, post procedure, at the reception.